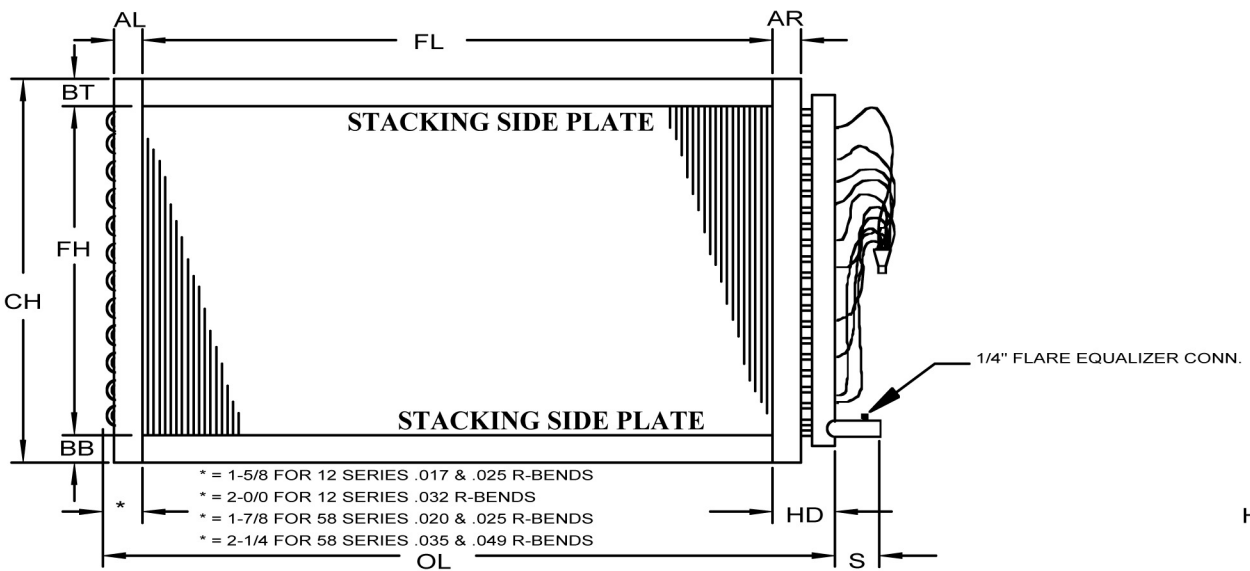
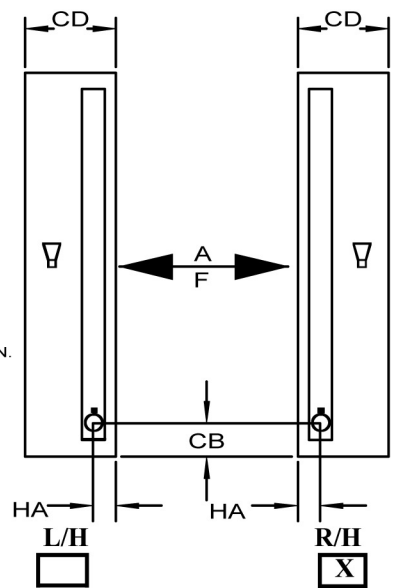


REPLACEMENT COIL DATA SHEET

(DIRECT EXPANSION COILS)
SINGLE CIRCUIT



- * = 1-5/8 FOR 12 SERIES .017 & .025 R-BENDS
- * = 2-0/0 FOR 12 SERIES .032 R-BENDS
- * = 1-7/8 FOR 58 SERIES .020 & .025 R-BENDS
- * = 2-1/4 FOR 58 SERIES .035 & .049 R-BENDS



DWG REF NO.
15
(AA)

REF. #RAEDWG2.DWG
DWG # DWG15.DWG
REV-1 5/05/97
BY: C. R. BROONER

RD FPI FH FL AL AR BT BB CH OL CD S HA HB CT CB HD

FIN = CORR
FIN MATL = ALUM
FIN THICKNESS = .006

CONNECTION MATL = COPPER
SUPPLY CONNECTION =
SUPPLY HDR. DIA. =
RETURN CONNECTION =
RETURN HDR. DIA. =
CONNECTION TYPE =

TUBE TYPE = 5/8
TUBE THICKNESS = .020

CASING GAGE = TS:16 SP:16
CASING MATL. = GALV

HAND = R
ITEM NO =
COIL CIRCUITING =

DATE: SALES PERSON: Ed Yamasaki

NOTES:
Sample DX coil